



BUILDING EVACUATION ASSEMBLY PROCEDURE

PROCEED SOUTH AND AWAY FROM THE BUILDING ASSEMBLE AT FAR END OF THE PARKING LOT

PLEASE ALLOW ROOM FOR EMERGENCY RESPONSE VEHICLES

SEVERE WEATHER ASSEMBLY PROCEDURE

SEEK SHELTER IN MAIN CORRIDOR IN THE EVENT OF A TORNADO OR LIFE THREATENING WEATHER
CLOSE ALL DOORS ALONG CORRIDOR

FIRST RESPONDERS

C.P.R. Cert. (exp. 08/2010)
John Charleston (111) 222-3333
Amanda Carter (111) 222-3333



R&D.C.

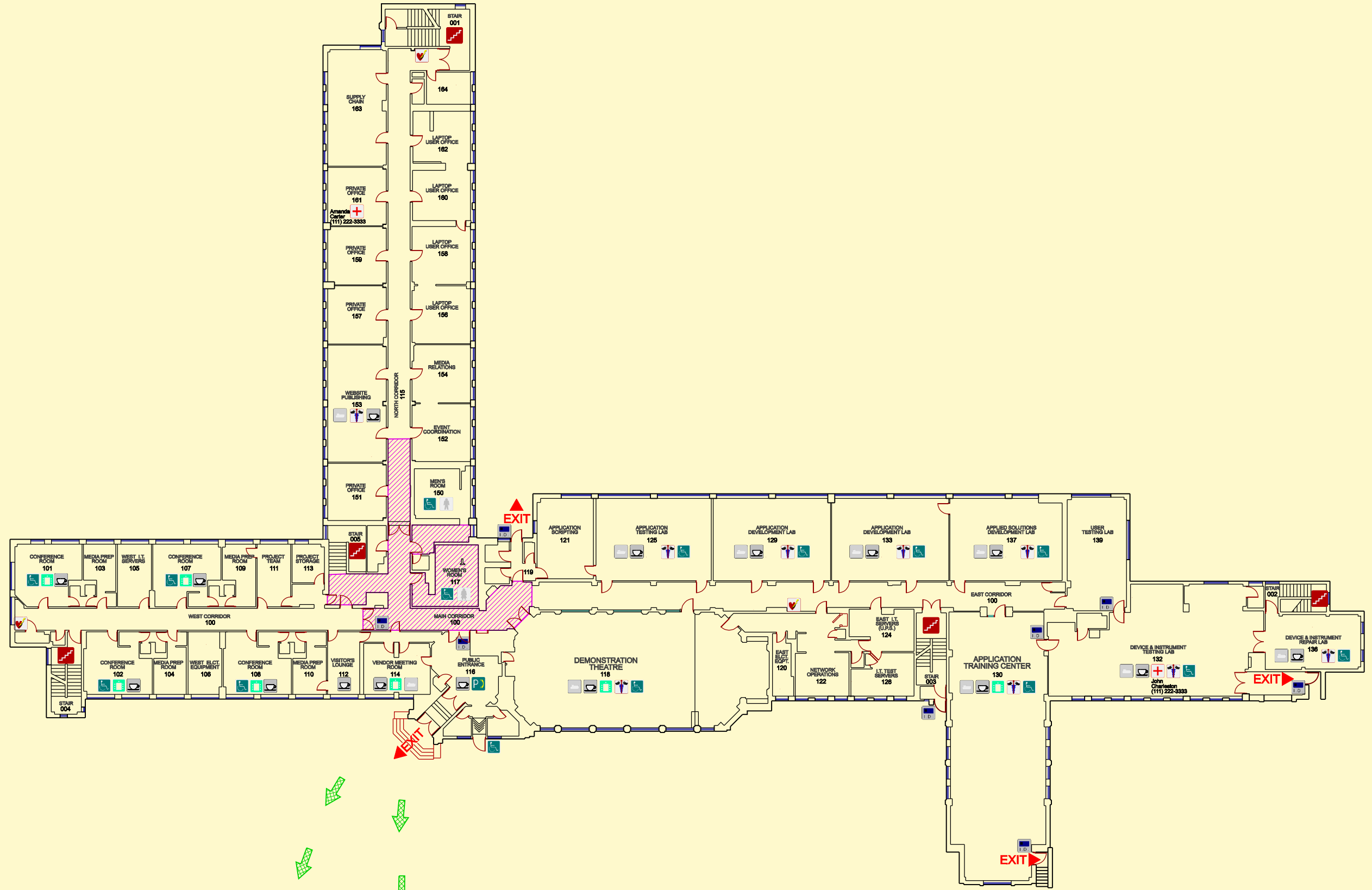
LEGEND:

- STAIRS
- FIRST RESPONDER (C.P.R. CERTIFIED)**
- FIRST AID KIT
- HEART DEFIBRILLATOR
- A.D.A. ACCESS
- PUBLIC INTER-OFFICE PHONE
- MULTI-FUNCTION PRINTER
- COFFEE / SNACK SERVICE
- MEETING ROOM
- CARD READER ACCESS
- I.D.
- SEVERE WEATHER SAFETY ZONE
- EVACUATION ASSEMBLY MEETING AREA

BUILDING No:

003

2009 EMERGENCY MANAGEMENT FLOOR PLAN



(N.T.S.)

FIRST FLOOR PLAN
INTEGRATED SOLUTIONS INSTITUTION
RESEARCH & DEVELOPMENT CENTER