







LEGEND:

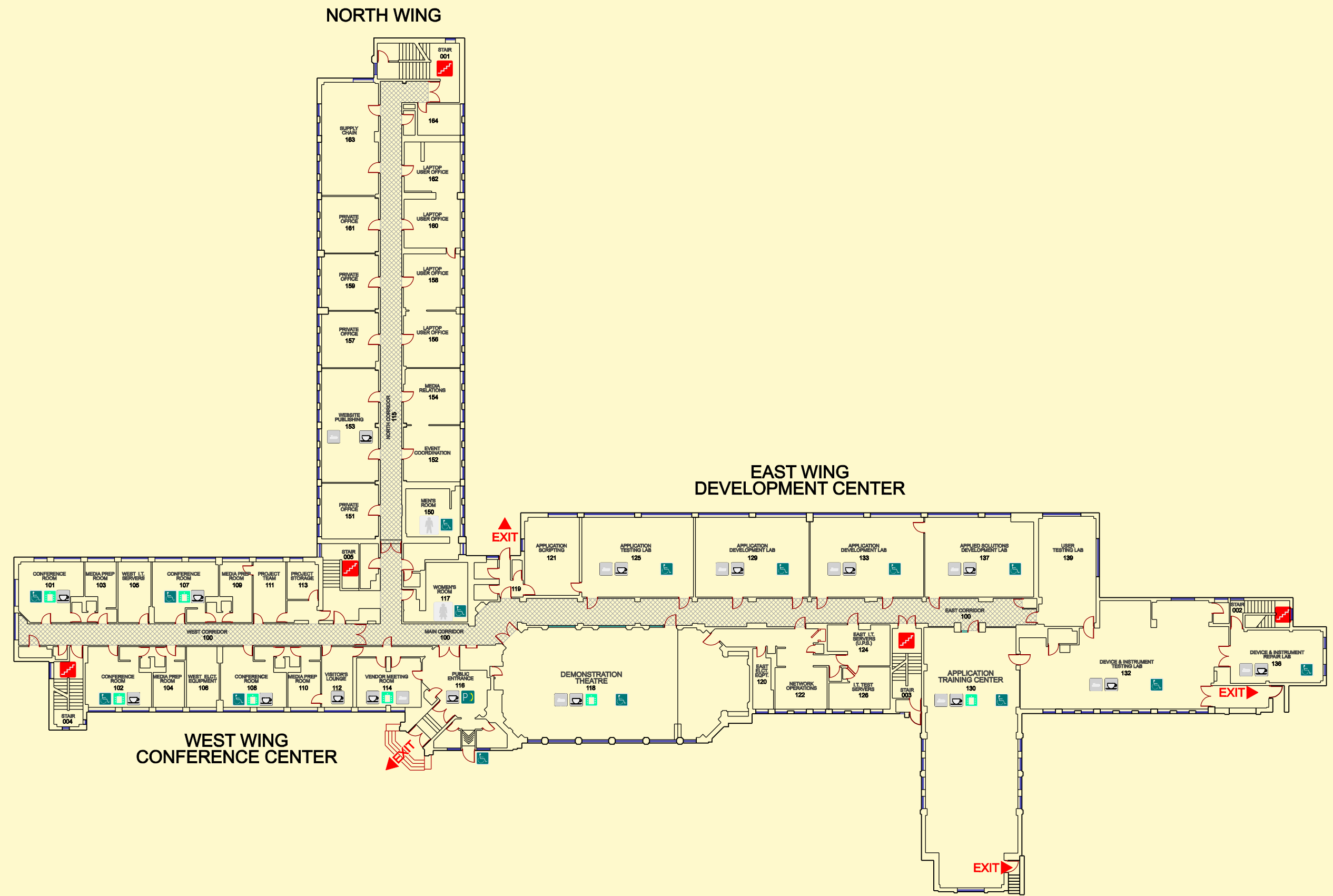
-  STAIRS
-  A.D.A. Accessible
-  Public Inter-Office Phone
-  Conference Room
-  Multi-Function Printer
-  Coffee / Snack Service

R&D.C.

1st Floor:
 IFMA Internal Area: 28,150 Sq.Ft.
 Floor Loading: 110 lbs./Sq.Ft. (Typical)
 Usage: (Primary) Research & Development
 (Secondary) Business Administration

 Full Time Occupancy: 41 Persons (57%)
 Temporary Office Docking Stations: 22

- CONFERENCE ROOM 101**
 - Capacity: 6 - 8
 - PolyCon Video Conference
 - 48" X 48" SmartBoard Touch Screen
 - 42" Plasma Flat Panel TV (Network Connected)
- CONFERENCE ROOM 102**
 - Capacity: 6 - 8
 - PolyCon Video Conference
 - Dual 48" X 48" SmartBoard Touch Screens
 - Dual 42" LCD Flat Panel TVs (Network Connected)
- CONFERENCE ROOM 107**
 - Capacity: 6 - 8
 - PolyCon Video Conference
 - Dual 48" X 48" SmartBoard Touch Screens
 - 42" Plasma Flat Panel TV (Network Connected)
- CONFERENCE ROOM 108**
 - Capacity: 6 - 8
 - PolyCon Video Conference
 - Dual 48" X 48" SmartBoard Touch Screens
 - Dual 42" LCD Flat Panel TVs (Network Connected)
- MEETING ROOM 114**
 - Capacity: 8 - 10
 - PolyCon Conference Phone (Only)
 - 48" X 48" SmartBoard Touch Screen
 - 52" Plasma Flat Panel TV (CATV & Network Connected)



FIRST FLOOR PLAN
 INTEGRATED SOLUTIONS INSTITUTION
 RESEARCH & DEVELOPMENT CENTER